

# HYWAYRAMPS


YOUR SAFETY HANDBOOK



**LOADING THOUSANDS OF KIWIS  
SAFELY EVERY DAY**

# THANK YOU!

Congratulations on your recent purchase of aluminium loading ramps. We would like to reassure you that you have made a wise decision; and it is our hope that you are very satisfied with your investment.



MODEL #:

SERIAL #:

CAPACITY:

DATE:

## **WARRANTY:**

All Hyway ramps come with a 24-month Manufacturers Warranty. Full details of this can be provided from Hyway. Email [info@hyway.co.nz](mailto:info@hyway.co.nz)

## **LIFE SPAN:**

All Hyway ramps are built using the toughest and highest spec'd alloy available in NZ. We have been manufacturing ramps since 1993 and have a very reputable name for quality and consistency. The life span of the ramps correlates to many factors, namely the type of machine being loaded, how frequently and the procedure followed when using the ramps. A standard set of Hyway loading ramps would have an average life span of 6 years.

# IMPORTANT GUIDELINES

Hyway recommends that the user follows these guidelines to ensure that your safety and the lifetime of the ramps is maximised.

- ☑ Load and unload on a firm flat surface
- ☑ Ensure that ramps are secured to carrying vehicle using supplied pins.
- ☑ Ensure the carrying vehicle will not move during the operation.
- ☑ The machine must not exert load on the ramps that exceeds the rated capacity
- ☑ Ensure machine runs along the centre line of the ramps
- ☑ If loading a machine with steel tracks, do not slew while in contact with the ramps
- ☑ Do not allow machine to touch, or grind along the side beams.
- ☑ Read & understand the “Ramp safety handbook” before loading.  
Any doubts or questions, Ph 0800 777 267

# LOADING

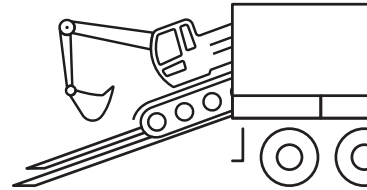
## Check Rating

Ensure that the weight of your machine does not exceed the rated capacity of your Hyway Ramps.



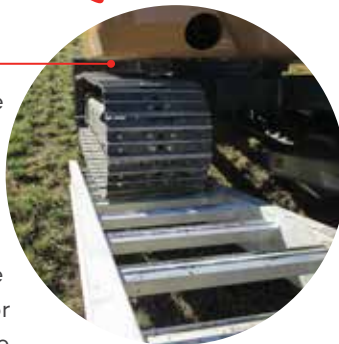
## Using Pins

Secure your Hyway Ramps to your truck deck using the pins provided.



## Lineup Ramps

It is important that the tracks or wheels of your machine travel up the centre of your Hyway Ramps. Ensure your Hyway Ramps are inline with the tracks or wheels of your Machine before loading.

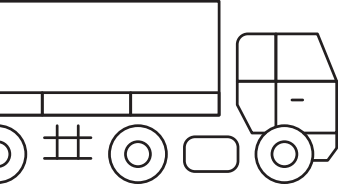


# GUIDELINES



## Ramp Loading

Whenever possible, Hyway recommends that the machine is reversed up when loading, and driven off forwards when unloading.



## Balance Point

When reaching the balance point, ensure your digger bucket is near the ground. This will assist the stability.



## Stowing

Stow your Hyway Ramps neatly under your machine to keep them safe during transit.



# SAFETY CHECKLIST

Hyway recommends a thorough periodic visual check over your ramps. The frequency of these checks depend on the level of use your ramps get. High use ramps should be checked each month minimum, and low use ramps should be checked annually.

## PERIODIC RAMP SAFETY CHECKLIST

- Check that the steel pins and r clips are with the ramps.
- Check that the rated capacity sticker is visible and readable.
- Inspect every rung, checking for punctured holes in the rung or cracks around any welds. (Report any findings.)
- Inspect beams of ramps. Look for cracks or sharp dents in beams. (report any findings)
- Inspect all welds around headplate. (Report any findings.)

We encourage you to lodge any concerns with us, please send in photos of the damage and a photo of the serial sticker located on the beam near the head.

Email: [saftey@hyway.co.nz](mailto:saftey@hyway.co.nz)

# REPLACEABLE PARTS

Some parts on the ramps can be repaired or replaced by your local engineer with aluminum welding capabilities. Please check with Hyway first.

Rung – part #: \_\_\_\_\_

Securing Pin: \_\_\_\_\_

Ramp Skid: \_\_\_\_\_

Ramp Capacity Sticker: \_\_\_\_\_

## **CONTACT US:**

0800 777 267

[info@hyway.co.nz](mailto:info@hyway.co.nz)

[www.hyway.co.nz](http://www.hyway.co.nz)

12 Arney St Greymouth

[www.hyway.co.nz](http://www.hyway.co.nz)

0800 777 267

**HYWAYRAMPS**

