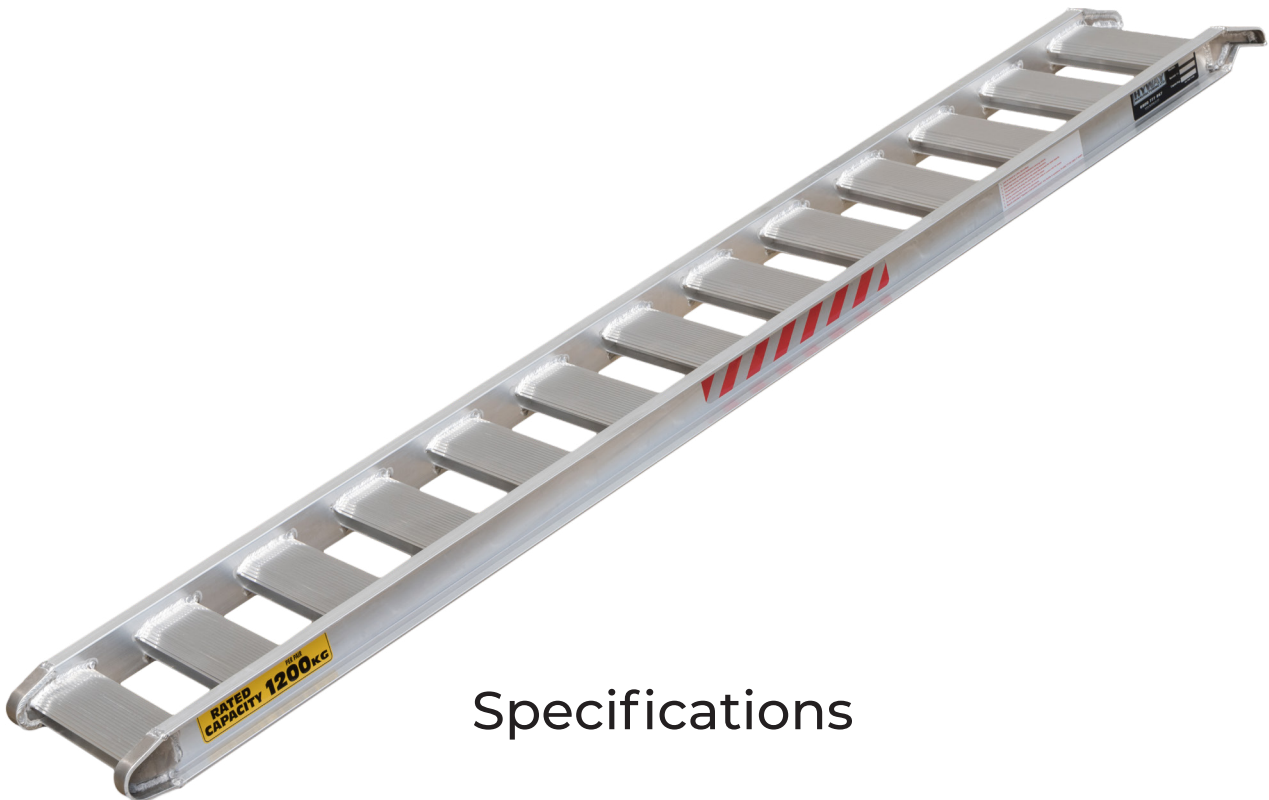


1200kg Ramps @ 2.4m long

Sku: L75 240

Short but tough. Loading your machinery onto your trailer will never be easier. At 2.4m long and rated for 1200kgs, these ramps are ideal for loading small excavators, commercial equipment and other small machinery. All Hyway Ramps are made from high tensile aluminium, produced right here in New Zealand!



Specifications

Length: 2400mm. Suitable for deck heights between 750mm - 850mm

Capacity: 1200kg (axle load across the pair)

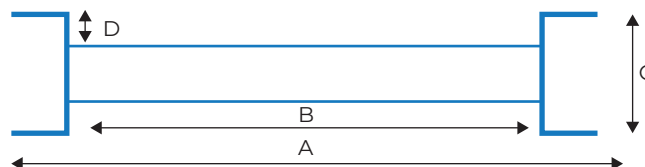
Weight: 16 kg each

A: 370mm

B: 300mm

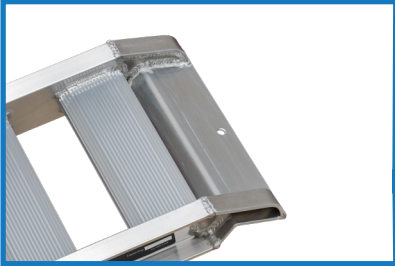
C: 75mm

D: 20mm



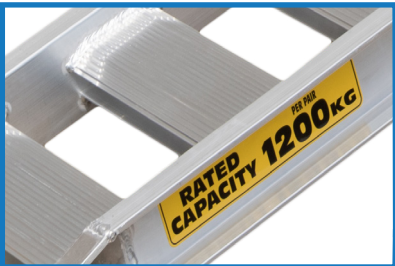
The details

All Hyway Ramps have specially developed components to achieve a balance of strength, weight and cost.



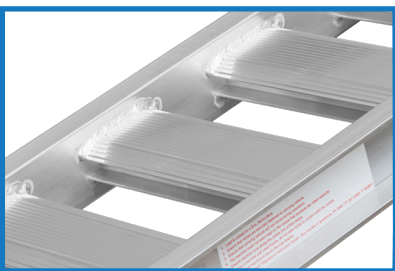
Headplate: The L75 240 ramps have a 90mm headplate which sits on the back of your truck deck. The headplate is positioned for a 20° loading gradient.

We recommend using the two steel pins supplied to secure the ramps to your deck through the headplate.



Capacity: These ramps are rated for a 1200kg axle load rating across the pair. The rated capacity must exceed the heaviest axle or concentration of load.

An excavator or tracked machine distributes its weight along the length of its tracks. However, a wheeled machine may have an uneven weight distribution between axles.



Rungs: High tensile aluminium extrusions. 300mm wide, set down 20mm into the side beams. They are serrated on the top surface, designed for superior traction.

Important tip: Don't let your tracks or tyres touch the side beams when loading/unloading your machinery. If your tyres or tracks are wide, let us know and we'll build you a ramp to suit your requirement.

We also specialise in custom builds. If there's any specification that doesn't quite suit, talk to us and we'll help you out.

Designed and Manufactured here in New Zealand